

HO-13C / 16C Series



This type of oscillator is a full size tristate Enable/Disable control. The metal package with pin #7 case ground acts as shielding to minimize EMI radiation

FEATURES

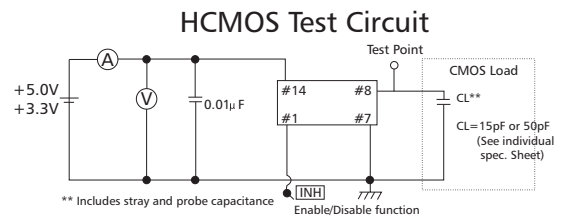
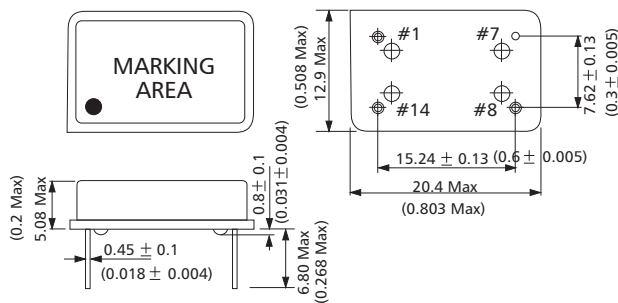
- Tri-State Enable/Disable
- 14 Pin Full size
- Industry Standard
- Wide Frequency Range
- Low Cost

Electrical Specifications

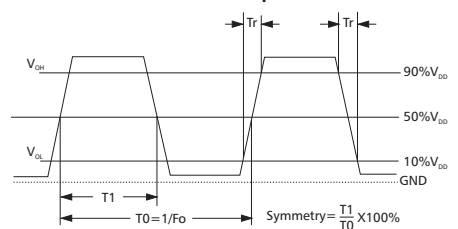
Parameter		Condition	HO-13C	HO-16C
Parameter Frequency Range	Fo		0.5MHz~150.00MHz	
Frequency Stability*		All Condition*	±25PPM, ±50PPM, ±100PPM	
Operating Temperature Range	TOPR		0°C ~70°C (-40°C ~+85°C option)	
Storage Temperature Range	TSTG		-55°C ~+125°C	
Power supply Voltage	VDD		5.0V+/-10%	3.3V+/-10%
Aging(First Year)		25°C ± 3°C	±5PPM	
Supply Current	IDD	0.5MHz to 23.999MHz	20mA Max	15mA Max
		24.000MHz to 49.999MHz	30mA Max	20mA Max
		50.000MHz to 69.999MHz	40mA Max	30mA Max
		70.000MHz to 150.000MH	60mA Max	45mA Max
Output Symmetry	Sym	1/2 VDD	40/60%(45/55% Option)	
Rise Time	Tr	10%VDD~90% VDD	10 ns Max	8 ns Max
Fall Time	Tf	90%VDD~10% VDD	10 ns Max	8 ns Max
Output Voltage	VOH		90% VDD min	
	VOL		10% VDD max	
Output Load	TTL Load		1~10TTL	1~5TTL
	HCMOS Load		~50M:50pF ~70M:30pF ~150M:15pF	~50M:30pF ~150M:15pF
Start up Time	Ts		10ms Max	
Pin 1,-tri state function			Pin 1=H or open: Output active at pin 8	
			Pin 1=L: High impedance at pin 8	

* Include 25°C tolerance, operating temperature range, input voltage change, aging, load change, shock and vibration

Mechanical Dimensions - mm (inch)



HCMOS Output Waveform



Enable/Disable Function		Pin	Connection
Input (Pin1)	Output(Pin8)	#1	Tri-State/NC
Open	Enable	#7	GND
$V_{IH} \geq 2.2 V_{DC}$	Enable	#8	Output
		#14	VDD

